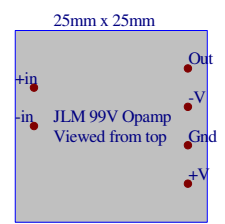
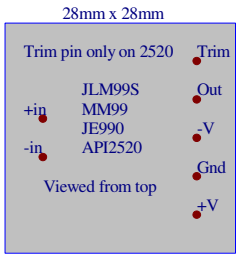
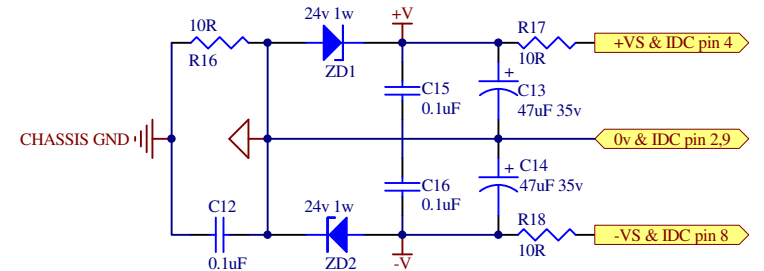


Balanced Input

Balanced Output

- JLMIO IDC Port**  
 Pin 1 - Unbal In  
 Pin 2 - 0v  
 Pin 3 - Bypass Relay (Note 1)  
 Pin 4 - +VS  
 Pin 5 - Unbal Out  
 Pin 6 - VCA CV (Note 1)  
 Pin 7 - + Bal Out  
 Pin 8 - -VS  
 Pin 9 - 0v  
 Pin 10 - Gain

Note 1. Dingo Pup doesn't have options for Bypass Relay or VCA CV on the JLMIO IDC Port



<http://www.jlmaudio.com>

Title		
<b>JLM Audio dInGo Pup circuit with all parts shown.</b>		
Size	Number	Revision
A4	1	A
Date:	27/03/2010	Sheet of 1
Designed By:		Joe Malone