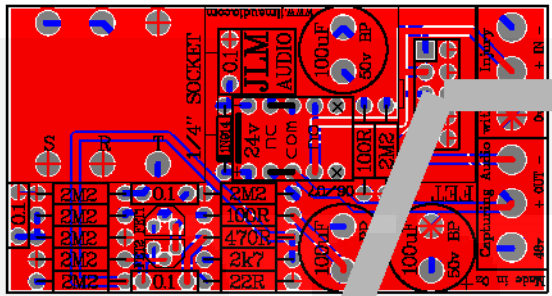
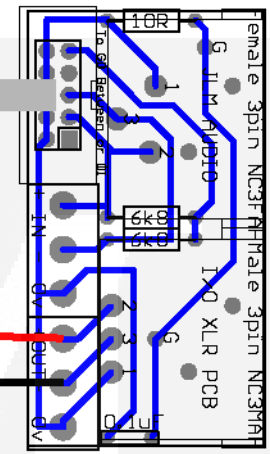


NEW Dual99v everything kit overlay



FET DI built as PCB overlay shows
 NO terminal blocks need to be fitted
 Only Wiring to DI is the supplied
 pre made ribbon cable

Pre made ribbon cable

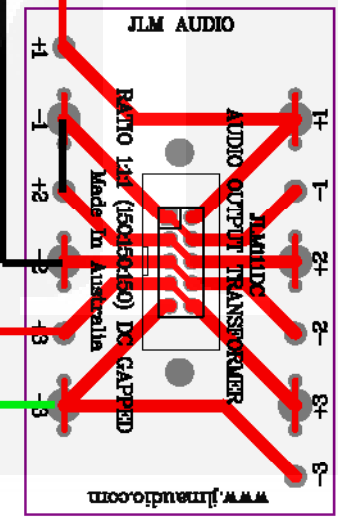
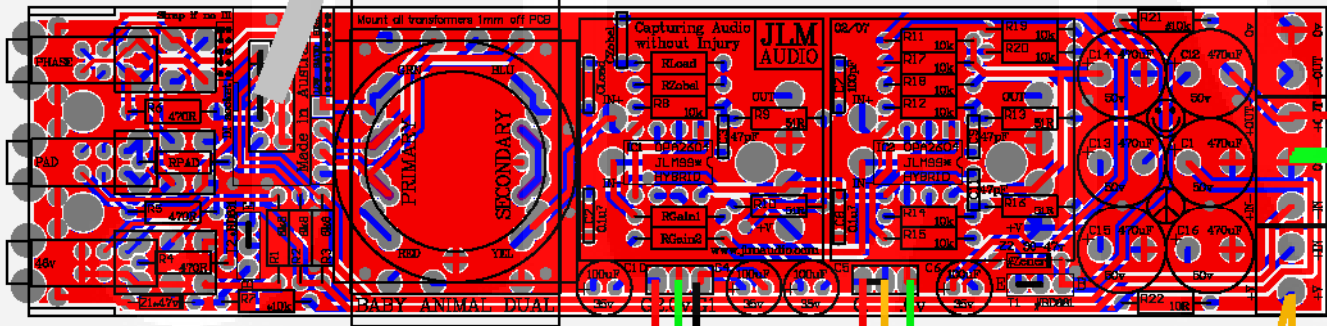


XLR IO PCB Fit
 XLR's and 10pin
 IDC connector.
 Make sure gap in
 outer box of IDC
 connector is closest
 to XLR. Bolts to
 back panel with 4
 black self tapping
 screws.

Tight twist Red & Black
 pairs of wires going to and
 from output transformer.

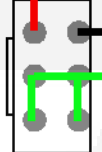
0v to next Dual99v

RPad = 51R, RLoad = 27k, Rgain1 & 2 = 270R, Rzobel & Czobel = Not Fitted
 OEP Transformer Ratio jumpered to Low ratio.



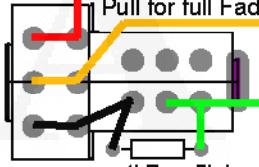
JLM111DC Output
 transformer bolted to
 back 3mm panel with
 bolt, washer, lock
 washer and nut. IF
 using early tag type
 JLM111DC just wire
 to same tag number.

GAIN Dual 10k rev log pot

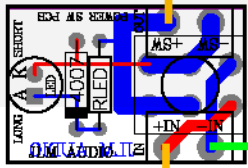


POTS Viewed looking at terminals

6dB Trim Control
 Pull for full Fader



4k7 or 5k1

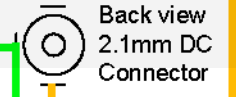


Power Switch PCB
 RLED = 10k, 4007 not fitted
 Overlay on PCB faces away from front panel

+48v to next Dual99v



500mA
 SLOW
 BLOW



Back view
 2.1mm DC
 Connector