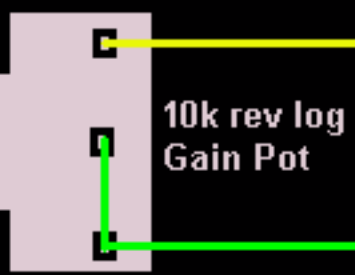


JLM BA2 and BA4 wiring Overlay for Baby Animal

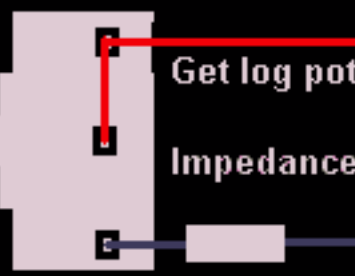
Pot viewed from underneath



10k rev log Gain Pot

Twist Green and Yellow wire together

Pot viewed from underneath



Get log pot and series resistor value from transformer table on JLM Audio website

Impedance Pot

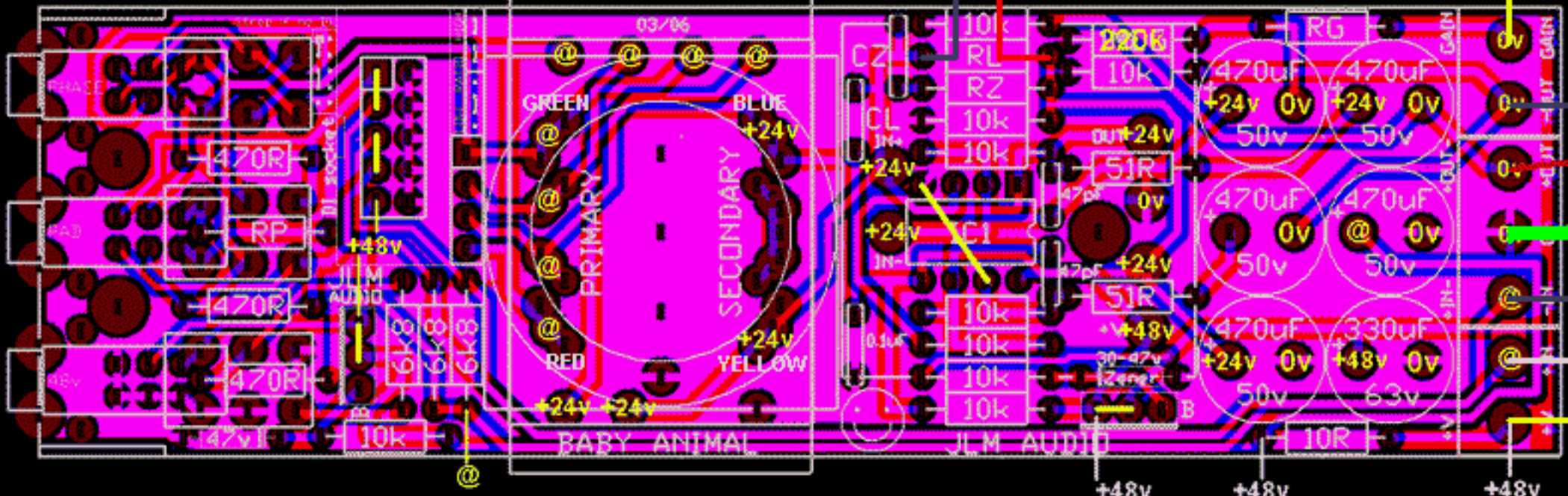
Twist Red and Black wire together

If adding Impedance pot leave RL off the PCB.

Note. Opamp -In and Out will be 0v with no opamp fitted

Baby Animal Voltages when run on 48v no regs fitted

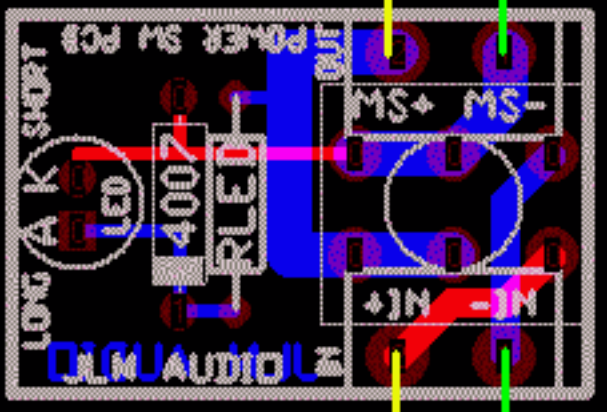
@=48v with phantom on and 0v with it off.



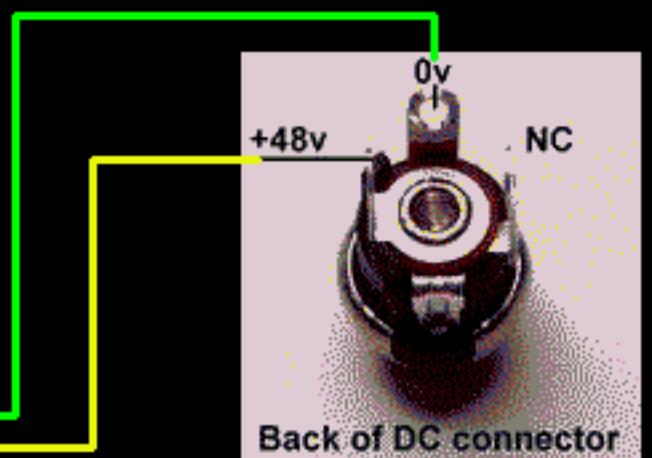
Note. If using output transformer wire primary to +Out and 0v and leave -Out not connected

- Black wire to Output XLR pin 3
- Red wire to Output XLR pin 2
- Green wire to Output XLR pin 1
- 0v to next Baby Animal Module
- Shield wire to Input XLR pin 1
- Blue wire to Input XLR pin 3
- White wire to Input XLR pin 2
- +48v to next Baby Animal Module

All voltages measured 0v in on back edge of BA PCB



RLED = 10k.
IN4007 Not Fitted.
PCB Overlay text faces away from switch.



Back of DC connector